

Update CFMC IRA Status

Martha Prada

CFMC IRA Coordinator

187 CFMC Regular meeting

Embassy Suites Hotel, San Juan, Puerto Rico

August 12-13, 2025



NOAA

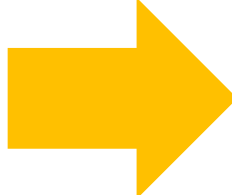
NATIONAL OCEANIC AND
ATMOSPHERIC ADMINISTRATION
UNITED STATES DEPARTMENT OF COMMERCE

Total payments

% Technical progress

% financial progress

April 15, 2015

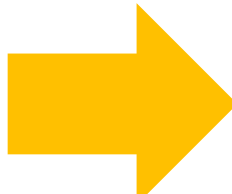


\$300,859.23

18

16

July 31, 2015



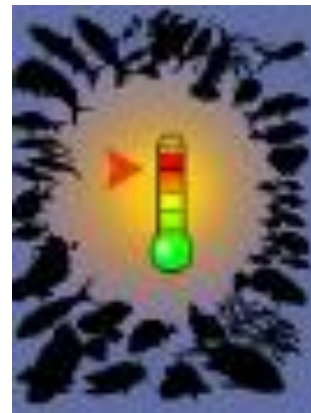
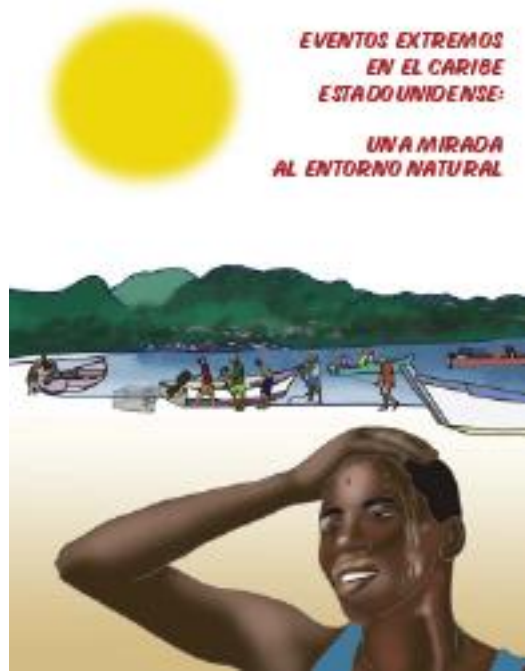
\$443,421.03

26

20

Project	Allocated funds	Total payments	% Technical progress	% financial progress
CFMC-IRA-2024-001 Martha Prada	\$215,880.00	\$68,284.57	45	32
CFMC-IRA-2024-002 Consultores Educativos Ambientales	\$229,615.00	\$70,101.60	25	31
CFMC-IRA-2024-003 HJR Reefscaping	\$363,485.00	\$45,457.82	25	13
CFMC-IRA-2024-004 GCFI	\$349,035.00	\$45,000.00	28	13
CFMC-IRA-2024-005 Beyond Our Shores Foundation	\$372,921.00	\$155,850.71	35	42
CFMC-IRA-2024-006 Isla Mar Research Expedition LLC	\$384,082.00	\$58,726.33	25	15
CFMC-IRA-2024-007 Dpt. Planning & Natural Resources	\$575,929.00			
Total / Average	\$2,490,947.00	\$443,421.03	26	20

Jul 31, 2025



1. Understanding extreme events and its impact on the fishery ecosystem and the fishers

Storybook: Spanish & English texts 3 chapters completed!!!

Chapter 1 illustration and design completed!!!

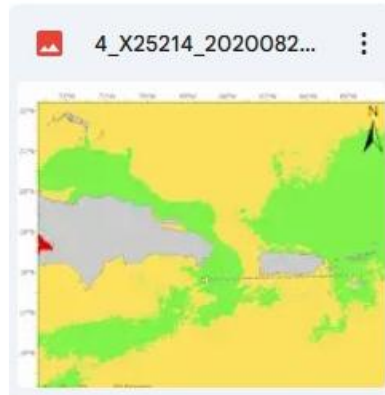
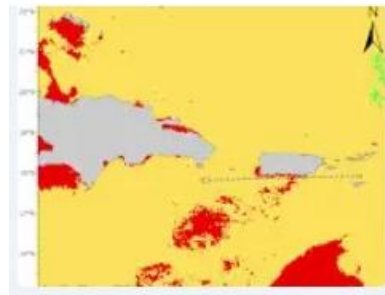
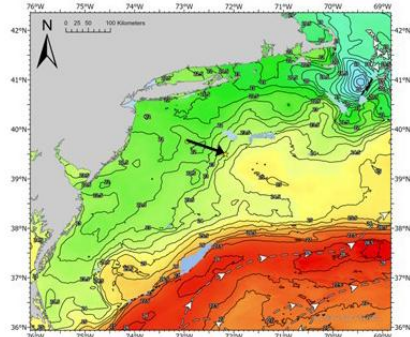
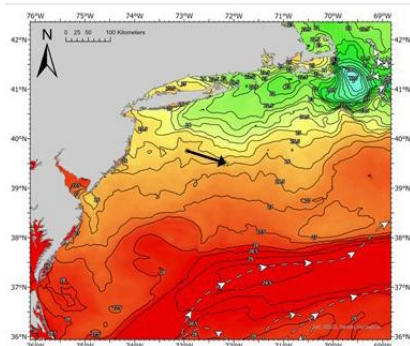
3 new section: Recommendations, tools & glossary under construction

Structured interviews PR & USVI in progress

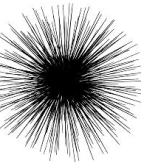
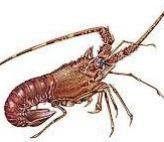
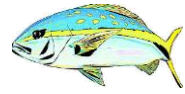
Workshops in PR defined.

2. Understanding Impacts of changing environments and Fishing Pressure on Dolphinfish

- ✓ 10 satellite tags + 173 conventional tags deployed, data collection & analysis continue
- ✓ **Overall high recapture rate (3.4%)**, 1(3) PR-LP, 1(5) MAB-RI, 1(7) MAB-NC, 2(47) MAB-FK. Connectivity + high fishing pressure
- ✓ **First return migrant: 18"FL grew 34"FL (12.5 p) in 219 days**, tagged off RI recaptured 120 nm E Cape Canaveral, FL, NOAA weather buoy 41010



3. Life history of priority managed species and evaluating their vulnerability to changing environmental conditions



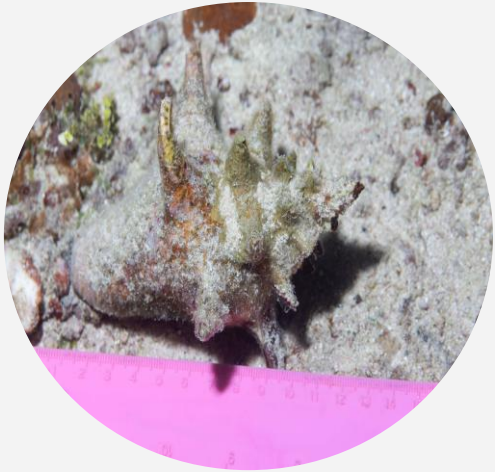
A total of 24 species selected as priority species, ID collaborators.

Continue literature review on the species' life history profiles.

Virtual presentation describing CVA process

Nov. 4-5, 2025, in person expert workshop in PR

4. Environmental vulnerability to Assess the ecological under a recovery plan: queen conch & Nassau grouper



Field protocols & training phase finalized

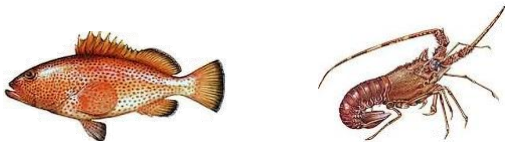
Successful inclusion of LEK in survey design & fishers' perspectives on habitat changes

Water quality data and identification of algal species seen at queen conch and Nassau groupers sites continue

Around 15% of surveys completed



5. Adapting to Extreme events in the U.S. Caribbean: Implementing a Smart Approach to Ensure Sustainable Red Hind and Lobster Fishing



Social scientist: analyze & validate social, economic, and management variables.

ID & evaluating adaptation options, prioritization, & key trigger points action & implementation pathways.

3 possible scenarios: 2 species, 3 management districts

Positive Scenario

Business-as-Usual Scenario

Negative Scenario

6. US Caribbean Community of Practice Hub to Operationalize Ecosystems Based Fisheries Management

A contract has been signed!!!

Admirative adjustments being created for project implementation!!!

Highlights / Challenges during implementation



- ✓ Ongoing building trust and sharing relevant LEK!!!
- ✓ Most projects moving forward smoothly
- ✓ Promising new information, higher understanding complex dynamics
- ✓ Advancing sustainable fisheries window @ CMFC webpage!!!
(<https://www.caribbeanfmc.com/advancing-sustainable-fisheries>)
- ✓ Lost modeling capacity support expected from NOAA/SFSC/CEFI (SST, °T @ depth, current changes predictions)
- ✓ Planning field work offshore proved difficult given rapid changes (deterioration) environmental conditions
- ✓ Setting up new administrative process could be time consuming and delay implementation

Home
About Us
Calendar
Contact Us
Meetings
Regulations
Fishery Management Plans
Links
CFMC ArcGIS Online
Enforcement Contacts
Advancing Sustainable Fisheries



Thank you

Questions?